

Labyrinth

2106
Pendant

Labyrinth

2106

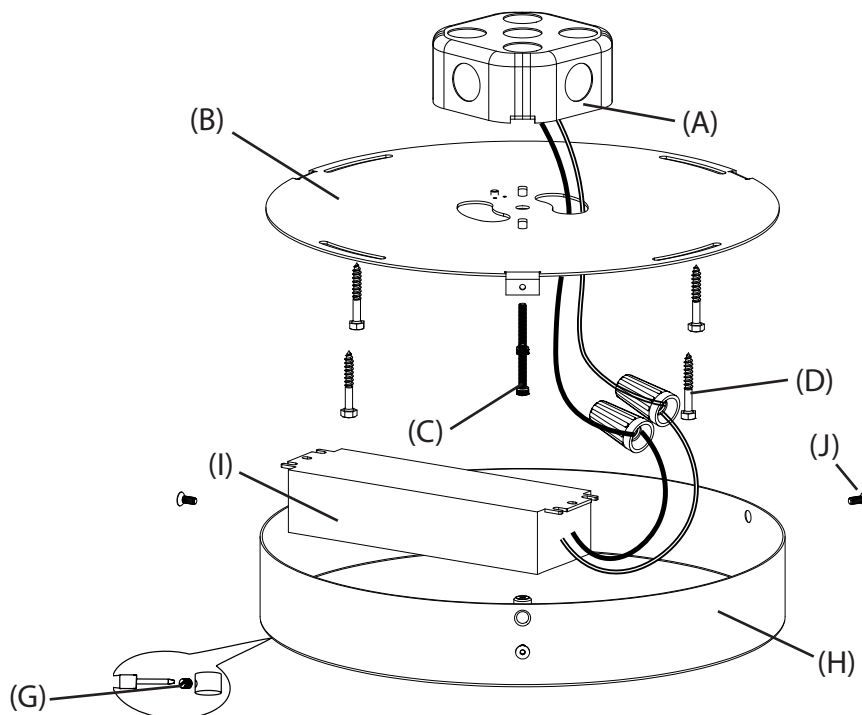
Pendant

Product Information and Warnings

IMPORTANT

- **Always disconnect the power before installing or replacing Luminares and before cleaning or other maintenance.**
 - **Consult a qualified, licensed electrician to ensure correct branch circuit conductor.**
 - ***Consulter un électricien qualifié pour vous assurer que les conducteurs de la dérivation sont adéquats.***
-
- Please read all included assembly instructions and warnings carefully before installation. Contact Customer Service if you have any questions or concerns. Before installation, please confirm that the fixture is compatible with your supply voltage and dimming system, if present.
 - LEDs are highly sensitive electronic devices, and must be treated with care. Do not open any factory sealed compartments, and avoid touching the LEDs with your hands or any object.
 - Although all our fixtures are equipped with protective devices, LED electronic systems are vulnerable to power surges and supply variations. Do not install LED fixtures on the same circuit as any motors, appliances, or HVAC systems.
 - Do not remove or bypass any LED Driver or Transformer that is provided with the fixture, and do not replace or substitute with another power supply.
 - Fixtures must be wired in parallel on independent leads; do not "daisy chain" multiple fixtures together or wire them in series.
 - All factory-made splices and connections must remain intact. LED circuits are carefully designed and built, and improper connections may damage the fixture.
 - The ends of coaxial pendant cords have been precisely stripped and split at the factory and must not be field cut. Excess cord or cable should be neatly coiled and reserved in the fixture canopy.
 - Any mounting hardware is provided for your convenience and should be used with discretion. Always use the appropriate hardware for the mounting surface.

1. Shut off power to the outlet box (A).
2. After deciding installation location and orientation, use included template on a flat surface to laser up to ceiling, or use dimensions included on page 4.
3. **CAUTION: Fixture must be supported independent of the outlet box. Customer is responsible for ensuring appropriate ceiling construction to support the weight of the fixture.**
4. Attach the mounting plate (B) to the outlet box (A) with the outlet box screws (C). Secure the plate to the ceiling using the included mounting hardware (D).
5. Install the ceiling grippers to locations marked in step 2. Please refer to page 3 on how to properly install ceiling grippers.
6. Determine height at which the fixture is to be hung.
Note that this fixture hangs from five steel cables. The power cords should not bear weight.
 - a. Adjust the cables to the desired height. Please see step 5 on page 3 for more information on how to install and adjust the cables.
 - b. Adjust the power cord to the desired length: Use the included slotted screwdriver to loosen the set screw. (G). Adjust length of power cord. Tighten the set screw to set. Reserve extra cord in the canopy (H).
7. Make appropriate electrical connections to the power supply (I) using wire nuts:
 - a. Connect the power supply's live wire to the live supply wire.
 - b. Connect the power supply's neutral wire to the neutral supply wire.
 - c. Connect the fixture's ground wire (green or uncoated) to the ground supply wire. If no ground wire is present in the outlet box, connect the fixture's ground wire to the mounting plate (B) using the green screw (included).
8. Fit the canopy (H) over the mounting plate (B), tucking any loose wire or cable inside, and secure with mounting screws (J).
9. Restore power to the outlet box (A).



Note:

- **This fixture is dimmable with Electronic Low Voltage (Trailing-Edge) type dimmers, Incandescent (Leading-Edge) type dimmers, and 0-10V type dimmers only.**

Care Instructions:

Use a clean, dry cloth when dusting. To protect the finish, avoid any harsh abrasives or chemicals.

Preparing and installing cable grippers

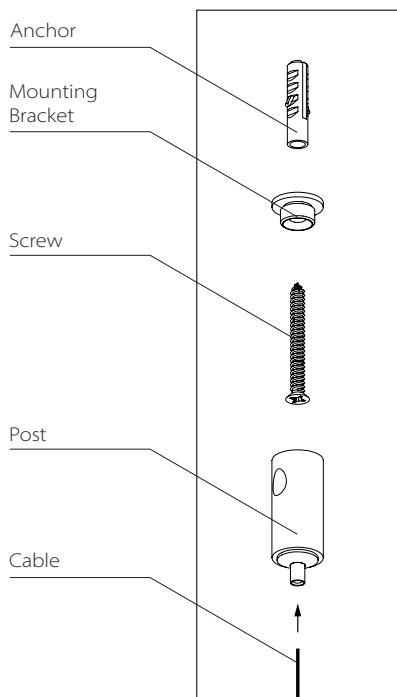


Fig. 2

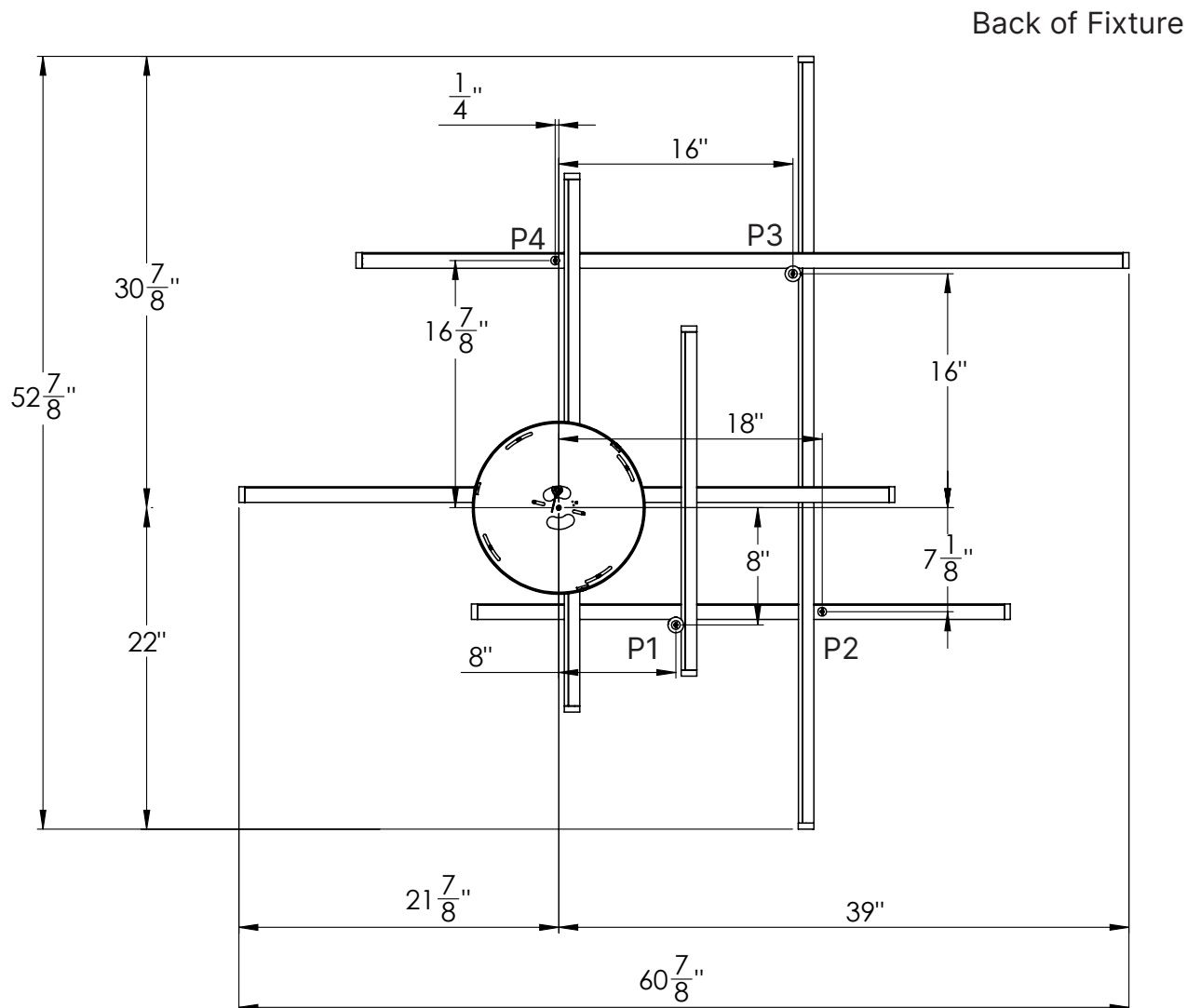
1. Cable grippers come pre-installed to the cables with caps. Remove this part to prepare for the installation. Press in plunger of Post to remove cable.
2. Unthread Mounting Bracket from Post.
3. Install the Mounting Brackets to the ceiling with Anchors and Screws, then screw the Posts onto the Mounting Brackets (Fig. 2).

CAUTION: Customer is responsible for ensuring appropriate ceiling construction to support the weight of the fixture.

4. Return to assembly step 6 on Page 2 before installing the cable to the Posts.
5. Insert the Cable into the Post and adjust to the required height: to shorten, push the cable up; to lengthen, push in the plunger while pulling down on the Cable, release the plunger to lock. Cut off the excess cable where it exits the Post.

CAUTION: Do not cut off excess cable until after the final step when the configuration is fully assembled and leveled.

Mounting Hole Locations



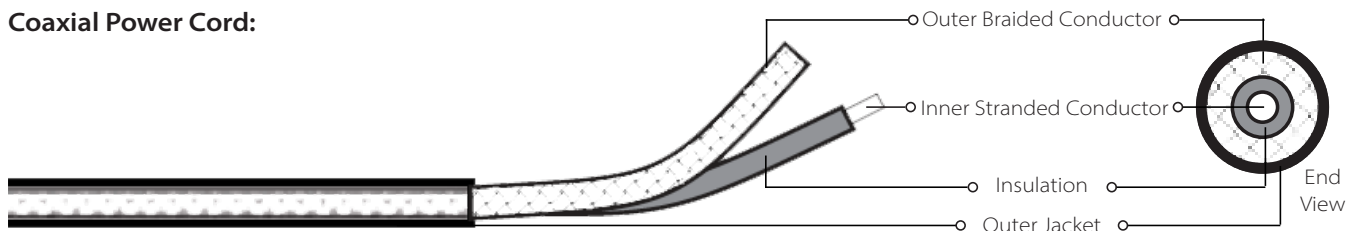
Front of Fixture

Please note, use of mounting hole dimensions is optional. It is strongly recommended to use the included template instead. For reference, the mounting holes are listed above (P1 through P4). The mounting holes are noted on the template.

Coax Splicing

FAILURE TO FOLLOW THESE INSTRUCTIONS WILL VOID THE WARRANTY

Coaxial Power Cord:



If field-cutting is required,
please follow these instructions:

1. Make a 1" slice along the length of the cord's outer jacket (Fig. 1).
CAUTION: Do not cut through the outer braided conductor.
2. Carefully strip the outer jacket of the cord and keep the outer braided conductors intact (Fig. 1).
3. Slide the outer braided conductor back to create a bulge and reveal the inner stranded conductor (Fig. 2).
4. Bend the cord to create an opening through the bunched-up portion of outer braided conductor, then pull out the inner stranded conductor (Fig. 3)
5. Twist together the outer braided conductor to form the negative wire of the fixture, then strip 5/8" off the end of the inner stranded conductor to form the positive wire of the fixture (Fig. 4).
6. Re-splice all power cords.

